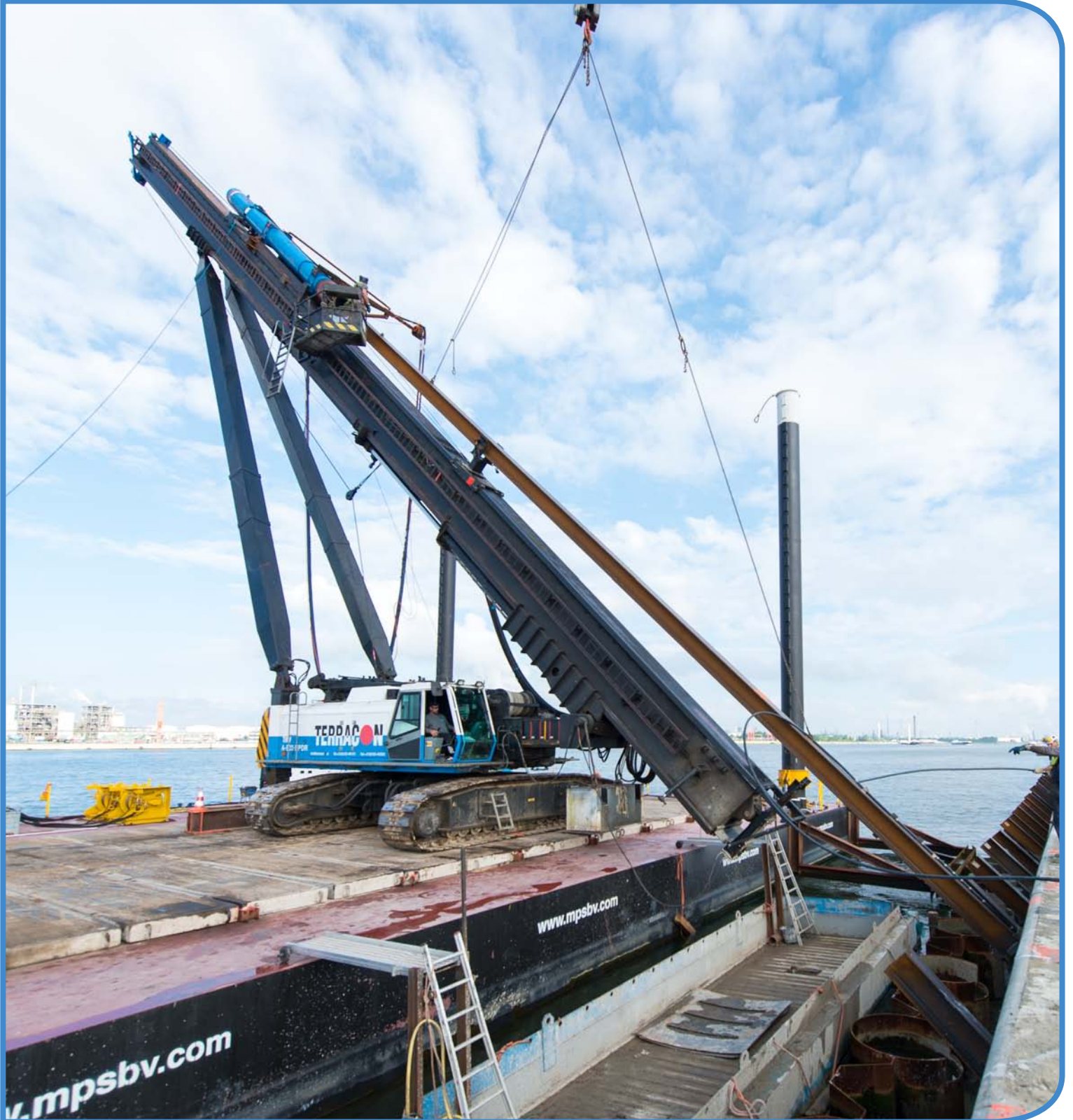
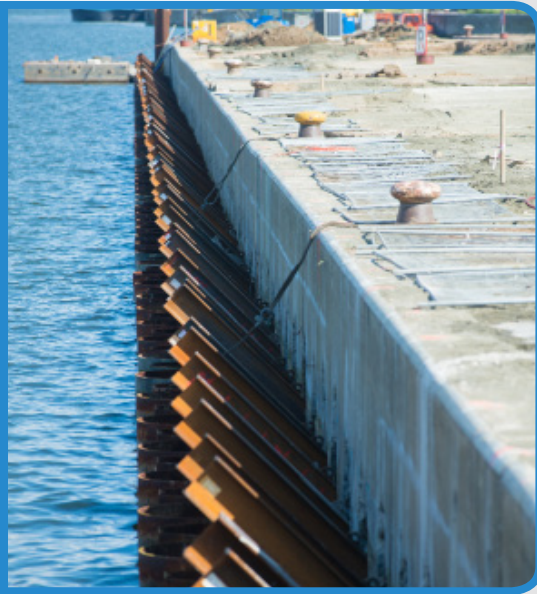


New quay wall Awn Kanaaldok B2



ANTWERP



Location: Antwerp
Client: Funderingscombinatie Terracon Voorbij vof.
Project: Antwerpen, Nieuwe kaaimuur
AWN Kanaaldok B2
Project description: Combi-wall for the purpose of a new quay wall
AWN - Kanaaldok B2

Project information: Installation of a combi-wall from a pontoon in the water, consisting of 223 steel 223 stalen tubular piles diam. 1220 x 18 mm, pile length 22,5 m and 222 double pile shelves AZ-24-700, length 17,50 m

Installation of 123 MV-piles HP 360*109, also from a pontoon in the water, some information according specifications and drawings.



Start execution period : February 2016

Terracon Funderingstechniek B.V.

Vierlinghstraat 17 | 4251 LC Werkendam |
Postbus 49 | 4250 DA Werkendam |
T: 0183 40 13 11 | F: 0183 40 35 83 |
I: www.terracon.nl | E: info@terracon.nl |

