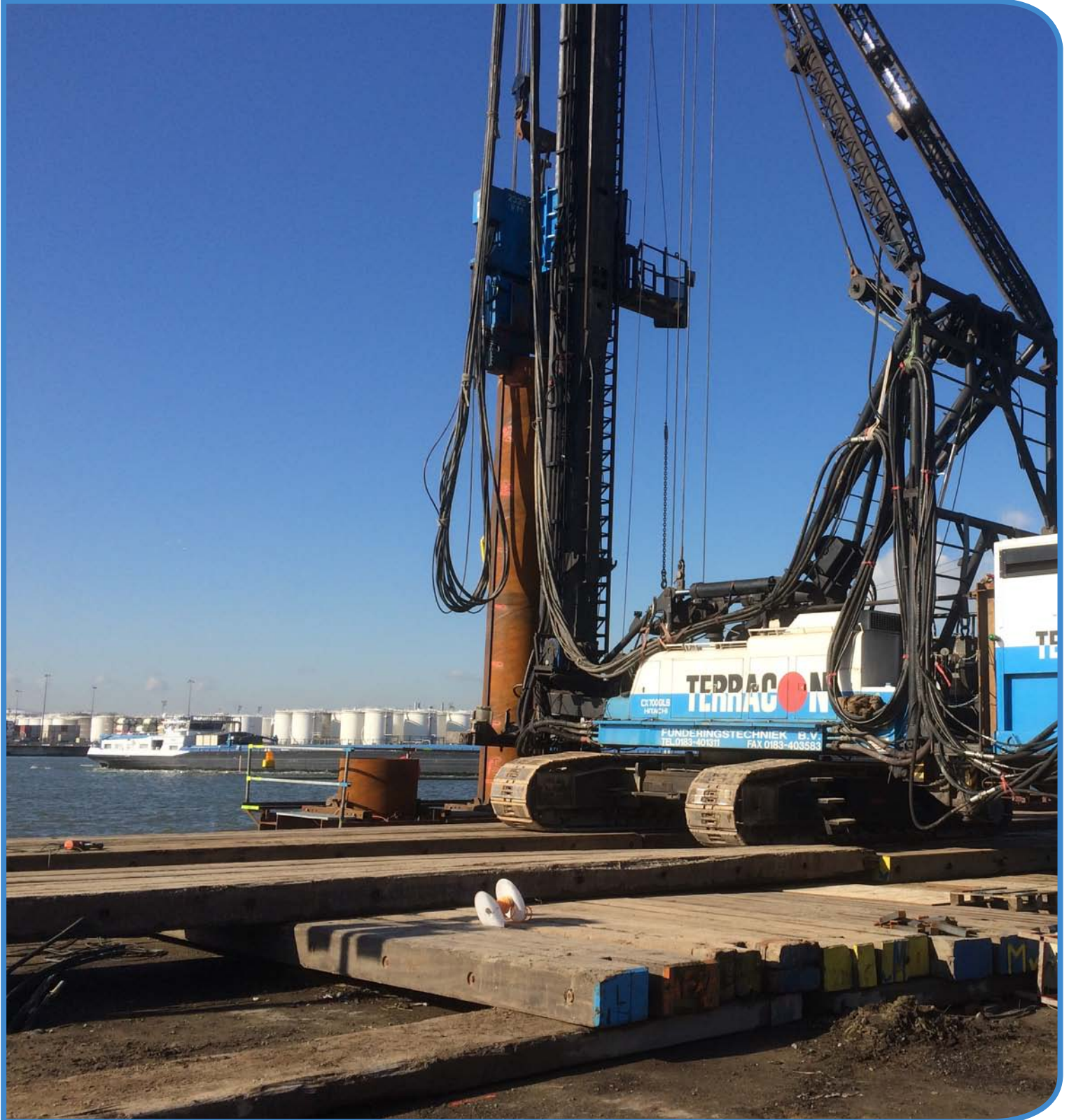
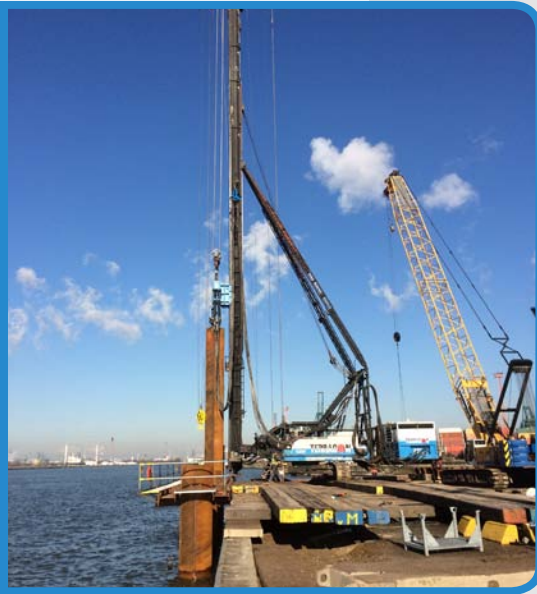


# New quay wall AWN Kanaaldok B2





Location: Antwerp  
Client: Strukton International N.V.  
Project: Antwerp, New quay wall  
AWN Kanaaldok B2  
Project description: Combi-wall for the purpose of a new quay wall  
AWN - Kanaaldok B2

Project information: Installation of a combi-wall from a pontoon in the water, consisting of 223 steel 223 stalen tubular piles diam. 1220 x 18 mm, pile length 22,5 m and 222 double pile shelves AZ-24-700, length 17,50 m

Installation of 123 MV-piles HP 360\*109, also from a pontoon in the water, some information according specifications and drawings.



Start execution period : February 2016

Terracon Funderingstechniek B.V.

Vierlinghstraat 17 | 4251 LC Werkendam |  
Postbus 49 | 4250 DA Werkendam |  
T: 0183 40 13 11 | F: 0183 40 35 83 |  
I: www.terracon.nl | E: info@terracon.nl |

